



# MONTHLY MEMBERSHIP PROGRESS REPORT

District 30 S

Results as of: 5/31/2016

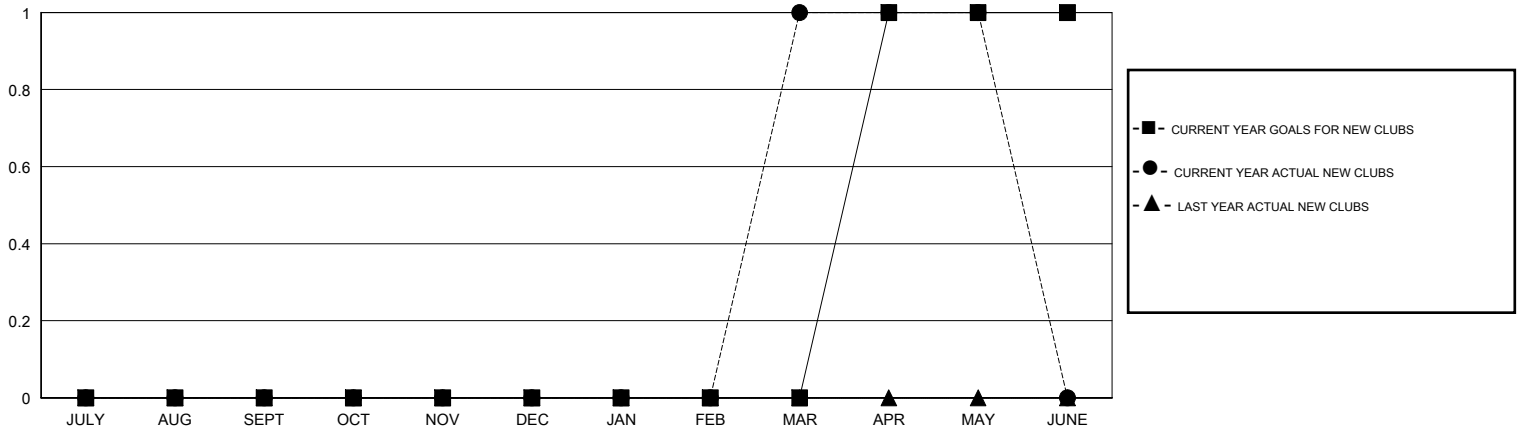
GMT: HARVEY WHITLEY

LOCATION MISSISSIPPI

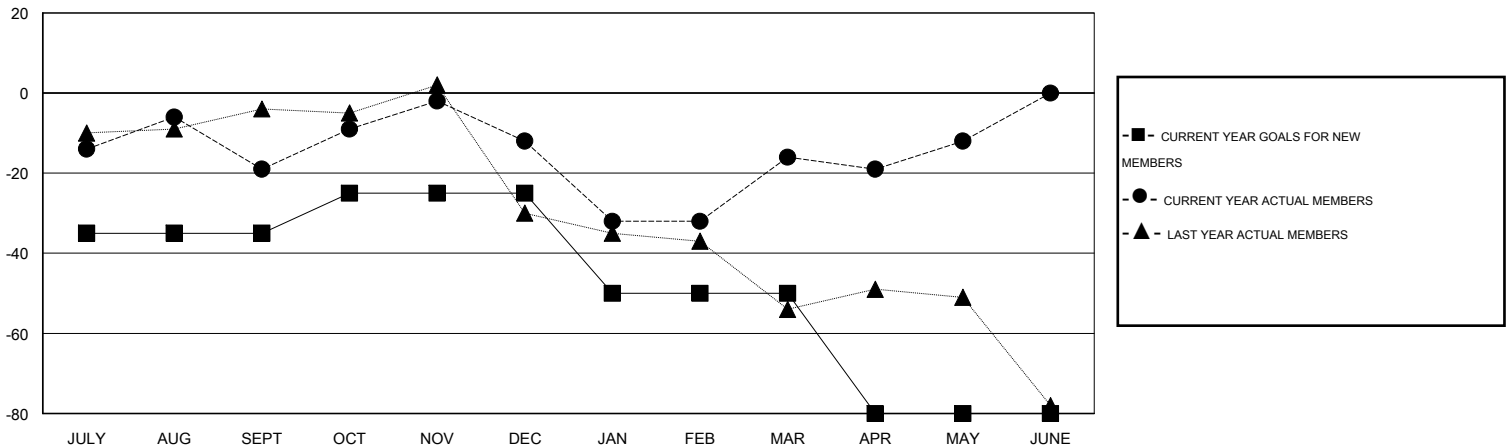
GMT CA 1

Clubs					Members				
RESULTS FOR 2015-2016					RESULTS FOR 2015-2016				
QUARTER	NEW CLUB GOAL	NEW CLUBS	DROPPED CLUBS	NET GAIN/LOSS	QUARTER	NEW MEMBER GOAL	CHARTER AND NEW MEMBERS ADDED	DROPPED MEMBERS	NET GAIN/LOSS
JULY/AUG/SEPT	0	0	1	-1	JULY/AUG/SEPT	-35	24	43	-19
OCT/NOV/DEC	0	0	2	-2	OCT/NOV/DEC	10	35	28	7
JAN/FEB/MAR	0	1	0	1	JAN/FEB/MAR	-25	59	63	-4
APR/MAY/JUNE	1	0	0	0	APR/MAY/JUNE	-30	24	20	4

GOALS AND ACTUAL NEW CLUBS CUMULATIVE



GOALS AND ACTUAL MEMBERS CUMULATIVE



DROPPED CLUBS: 3	31 CLUBS OF 56 ADDED 1 OR MORE NEW MEMBERS	<u>GENDER DISTRIBUTION</u>	
<u>DROPPED MEMBERS</u>		MALE	916 (71.40%)
DECEASED	<a href="#">CLICK HERE FOR HEALTH ASSESSMENT DATA</a>	FEMALE	367 (28.60%)
CLUB CANCELLED		FAMILY UNIT MEMBERS	145
OTHER		HEAD OF HOUSEHOLD	71
TOTAL		NON-HEAD OF HOUSEHOLD	74